

KMT governance and formal organisation of the partnership

2024/5

Version number	1.1
Policy status	Approved
Date of issue	27/08.24
Date of review	May 2025

Leigh Academies Trust and Kent & Medway Training

The legal entity for the Kent & Medway Training (KMT) SCITT is Leigh Academies Trust MAT.

Leigh Academies Trust is one of the country's largest and most-established multi-academy trusts operating across Kent, Medway and South East London. It contains primary, secondary and special academies and is highly inclusive and successful. Our mission is to deliver "education for a better world" by ensuring that young people in our academies have an excellent start in life regardless of their background or ability.

KMT is one of the four founding organisations of the Leigh institute, which ties together the work of the following organisations; enhancing their offer by ensuring opportunities for collaboration and mutual support:

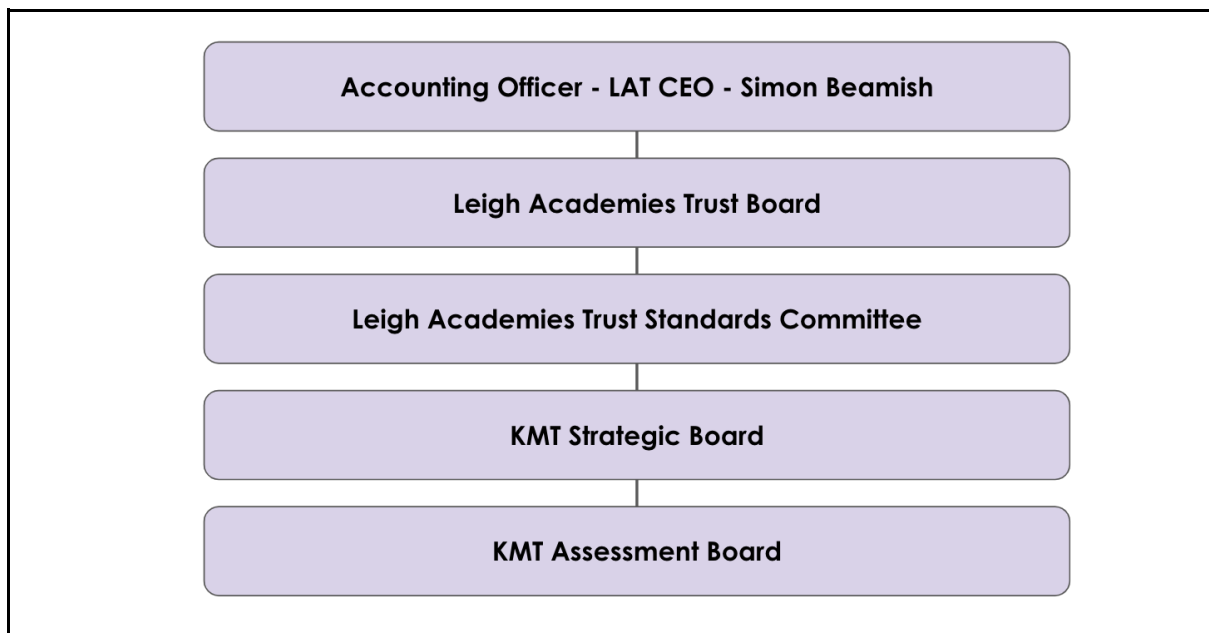
- Kent and Medway Training SCITT
- Thames Gateway Teaching School Hub
- LAT Apprenticeships
- Kent & Medway Maths Hub

For nearly 30 years, the KMT SCITT has been successfully training teachers. Now KMT is one of the largest and most highly regarded School Centred Initial Teacher Training (SCITT) in the South East. We are united by our principles and our commitment to working together to achieve our mission to deliver "education for a better world".

In May 2022, KMT received confirmation of successful re-accreditation in the first round of the Department for Education's (DfE) new accreditation process. This means that we can continue to deliver our successful training leading to Qualified Teacher Status (QTS) after September 2024.

Visit the KMT website to find out more: <https://www.kmtraining.org.uk/>

The management structure of KMT:



KMT Strategic board

The Strategic Board is comprised of:

- Chair (LAT Academies Director)
- LAT Trust Board Director
- Director of The Leigh Institute
- LAT Principal
- Up to 4 KMT partner Headteachers (one from each geographical hub)

Also:

- Deputy Director of The Leigh Institute/ Head of KMT
- Finance Lead

The Strategic Board has responsibility for monitoring that the programmes are continually developing following reflective practice, regular reports, evaluations, strategic planning and application of new Government initiatives and requirements, for managing the annual budget, for quality assurance, for all decisions regarding key personnel, for the appointment and removal of external moderators, for approving and monitoring the Self Evaluation Improvement Plan (SEIP) and for ensuring the probity of its financial procedures.

KMT Assessment board

The Assessment Board is comprised of:

- 4 Principals or Senior Leaders from Secondary partner schools (one from each geographical hub)
- 2 Principals or Senior Leaders from Primary partner schools

Also

- Deputy Director of The Leigh Institute/ Head of KMT

- Deputy Head of KMT

The Assessment Board supports the KMT moderation and decision making processes to award Qualified Teacher Status to the cohort of Associate Teachers. The External Moderator's initial feedback is shared with the Assessment Board and considered prior to Assessment Unit 3. The Assessment Board will meet at least three times and more often if necessary, to fulfil its responsibilities.

External Moderator(s) for Programmes will be appointed in line with DfE criteria.

The operational structure of the KMT SCITT

